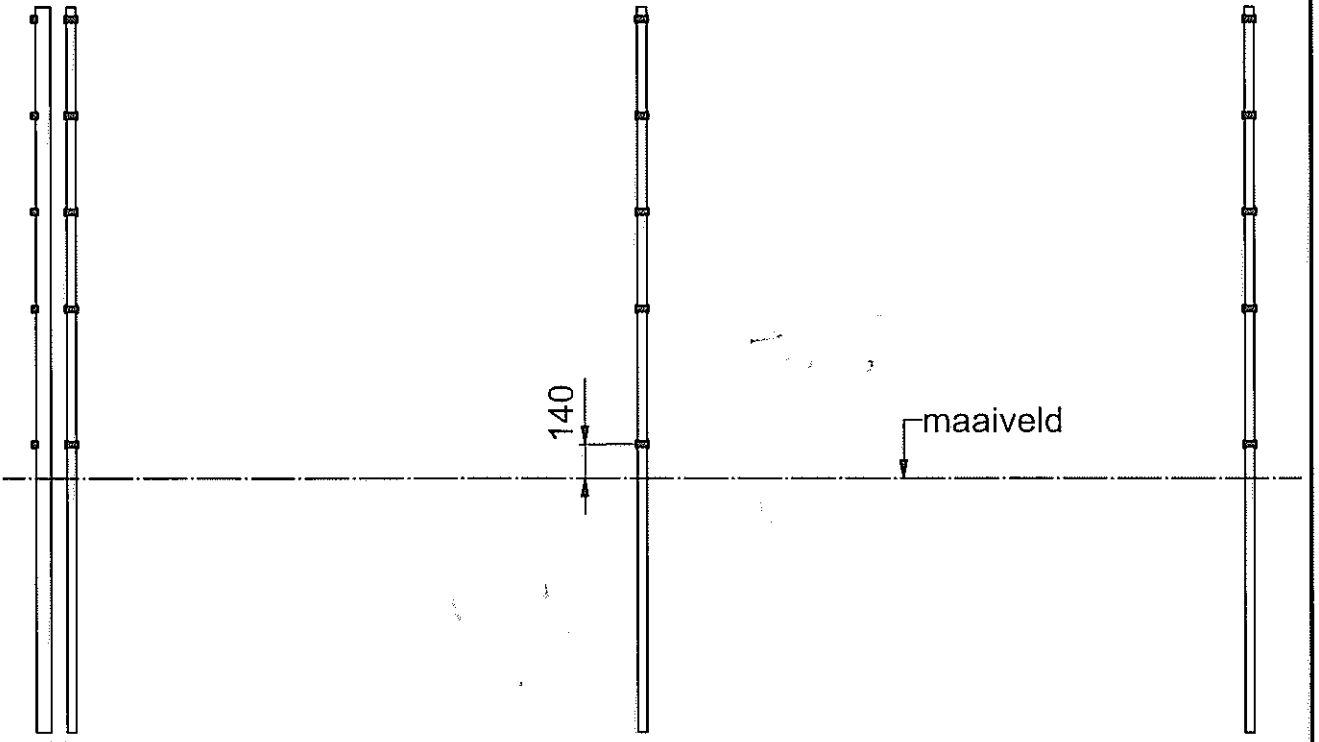
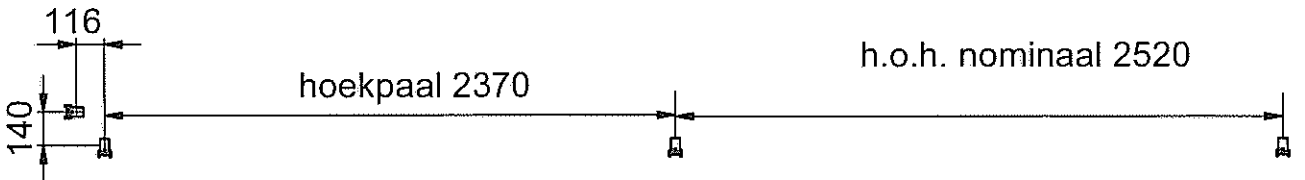
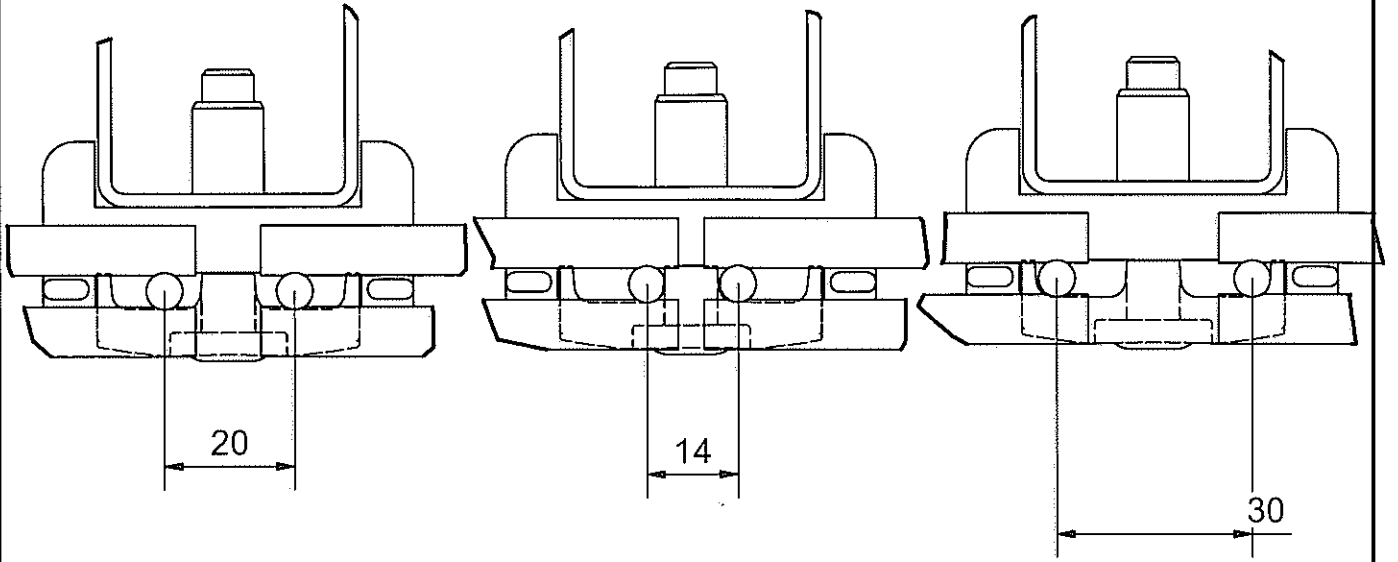




nom. 2520

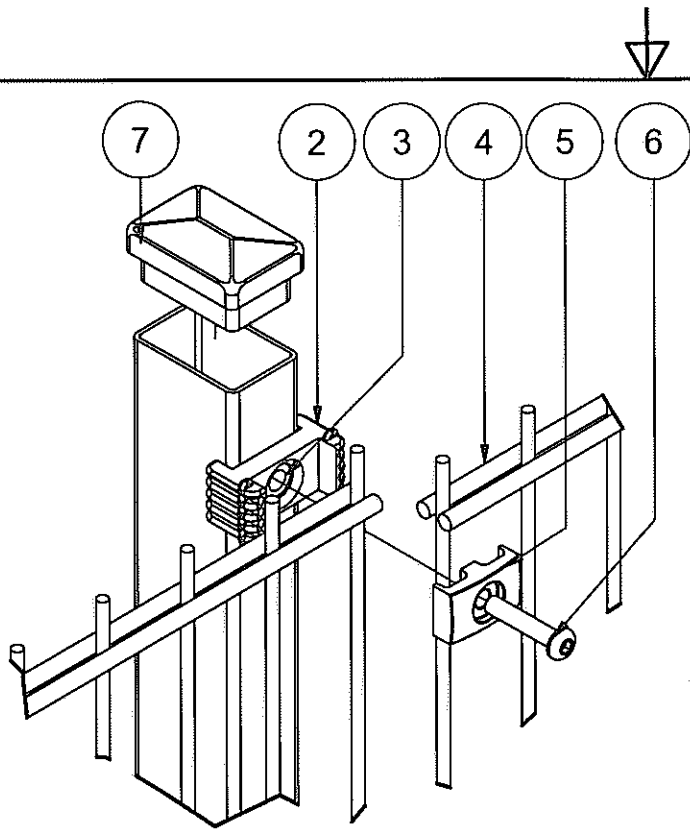
hoh 2517

hoh 2525



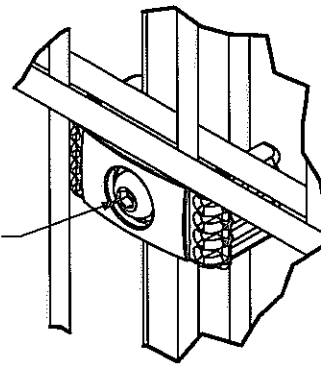
montage Pallas (rail)		pallasrail
Pallas	Sheet 1 / 4	



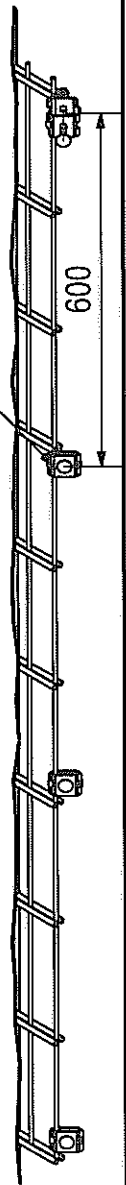
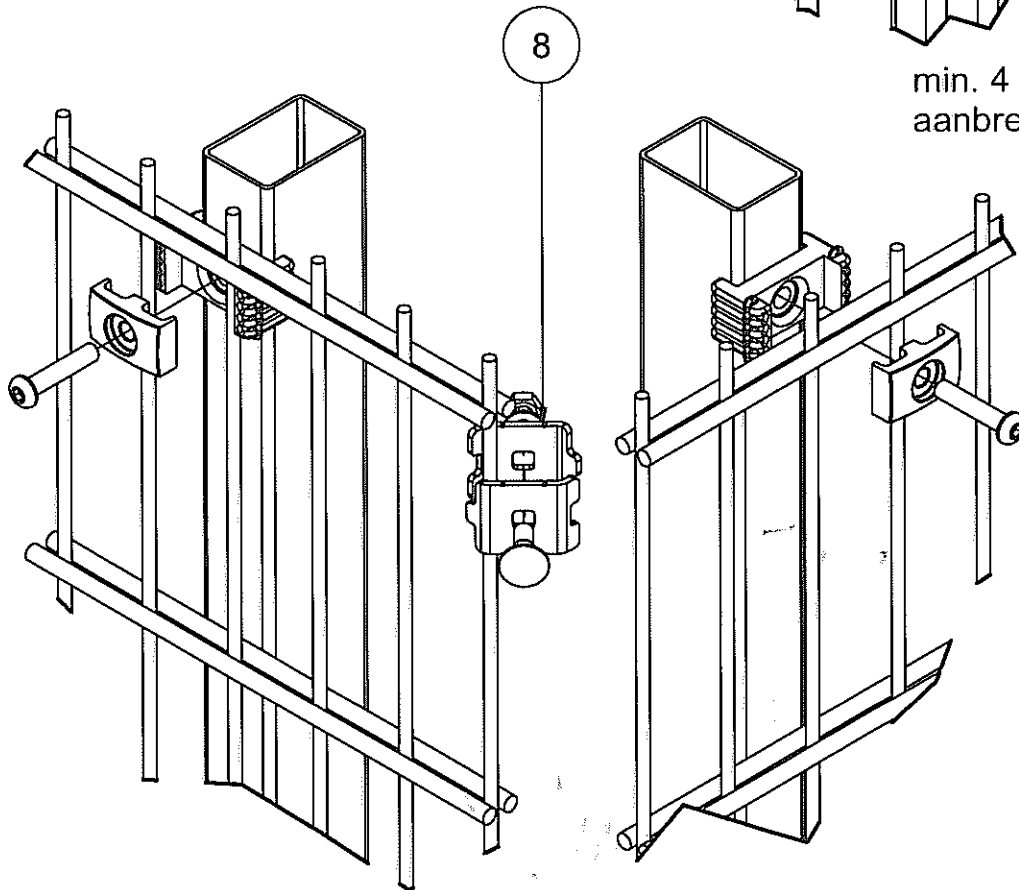


ITEM	PART NUMBER
1	p-stdstm...
2	bvblstmzwa
3	blklm8verl
4	empal...
5	bvstmzw
6	p-schrlgbk840
7	kapstm6040
8	kgsetstmhp
9	railpro BIT 440501

aanhaalmoment
min. 30 Nm



min. 4 st
aanbrengen



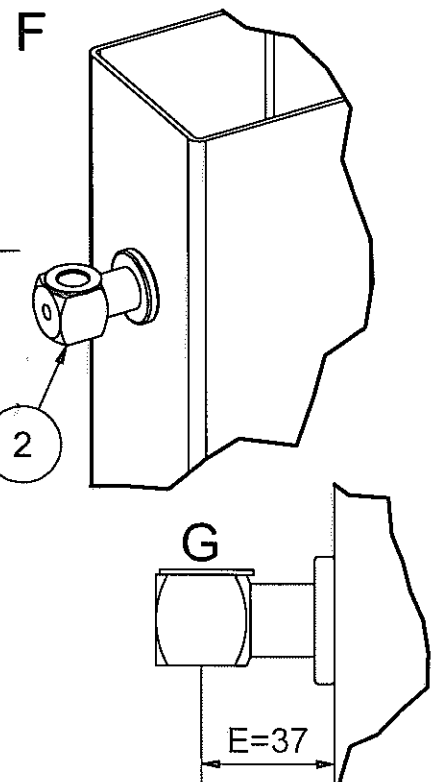
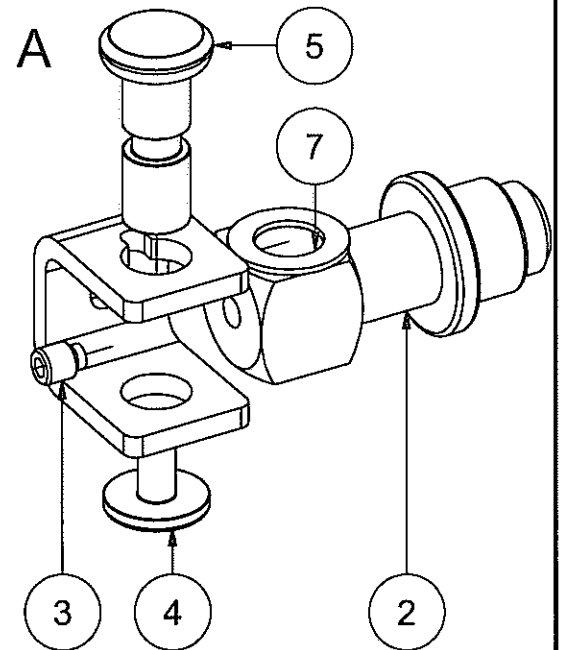
montage Pallas (rail)		pallasrail
Pallas		Sheet 2 / 4



Prorail	10	12	15	20	25	30	35	40	45	50
B=	950	1250	1550	2000	2450	2900	3500	3950	4400	5000
A*=	1045	1345	1645	2095	2545	2995	3595	4045	4495	5095

A = (1345) zie blad 2

- Plaats pilaster exact volgens de maat A
- draai scharnierbout (2) op de juiste maat in lashuls van pilaster (detail C), is maat A anders nominaal vooraf maat E corrigeren.
- schuif vleugel over scharnierbout en plaats onderlegging (7) en scharnierpen
- werking aanslag oké ?
- zet poortvleugel 90° open
- borg scharnierbout door stelschroef (2) aan te draaien, controleer beweging poort.
- Indien stelschroef (2) niet in gat vastzit schroefdraad borgen met bijv. Loctite.
- item (4) is extra borging

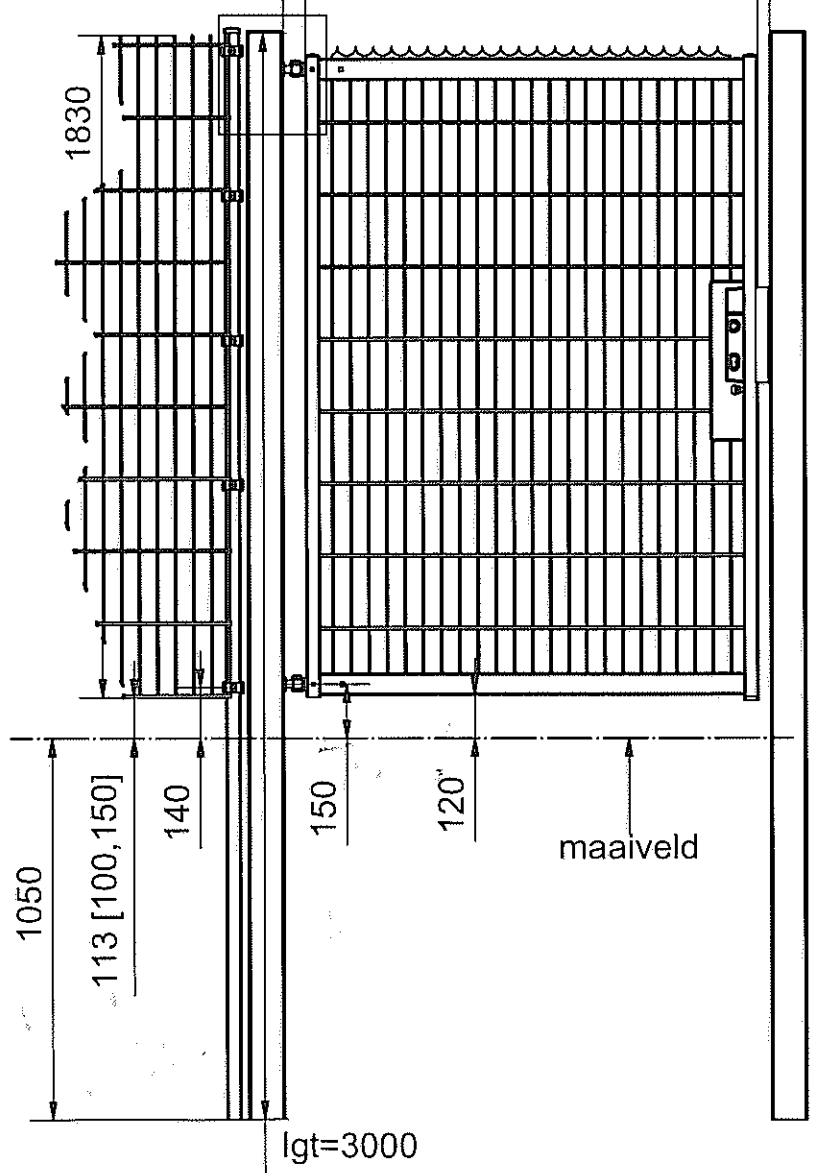
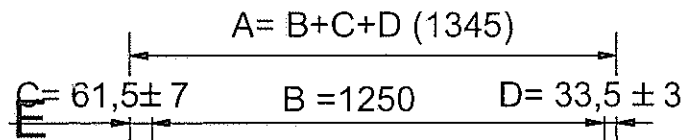
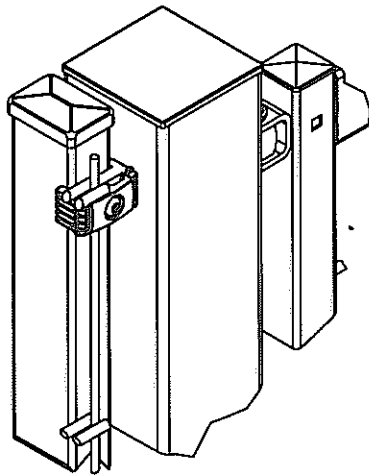
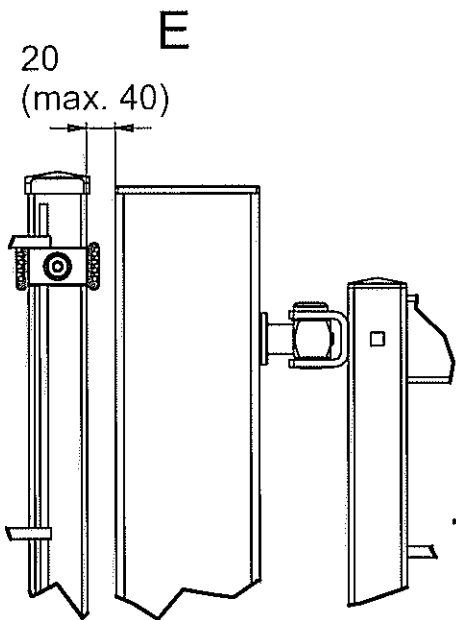


1050

maaiveld

150

E=37



p-stdstm	lgt
80	2000
100	2200
120	2400
140	2600
160	2800
180	3000
200	3200
220	3400
240	3600



	montage Pallas (rail)	pallasrail
Pallas		Sheet 4 / 4